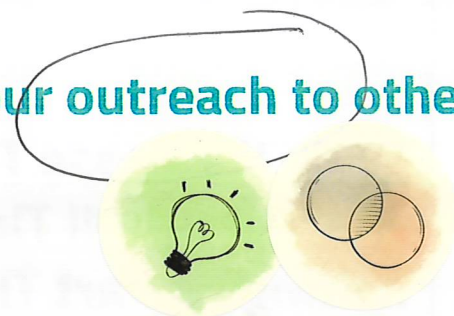


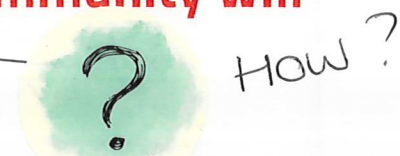
Where are you seeing the Kingdom of God emerging?

Within us at all times and with our outreach to other people



What are you fearful about?

We are concerned that the Minster community will jeopardise the Christian goodwill



Fearful of church dying — the building / people.

Fear of being abandoned



What are you hopeful for?

Support through this challenging time



Hopeful for growth

Wanting to feel cared for



How you can pray for us.

We all need to pray for each other

yes ~~but~~ want to give you an encouraging hug.



Interesting that this is what our new Church are — community / to belong  
Families at Forest seeking too

Feeling of isolation, abandonment  
Lack of direction

→ Lack of community / belonging — what we all need.

**Who are you?**

**St Peter's Church, Redmile.**  
**Small rural parish with population of approx. 200.**  
**No worshipping community even before Lockdown. Of the two who did attend services, one is elderly.**  
**The other regularly attends St Mary's, Bottesford.**  
**Only 2 members on PCC.**

**Where have you come from?**

**St Peter's dates back to 1100s. Grade 11 listed.**  
**Small congregations for the last 40 years.**  
**35 years ago we had a thriving After School Club and weekly services. Before Lockdown 2 services per month.**  
**Supported by 4/5 from Barkestone and Plungar congregations.**

**Where are you going?**

No worshipping community.  
Church is used by community at large for weekly choir, craft workshops, Christmas Fairs as we have no village hall.  
The vision would be to use the building as a community hall.  
Major repairs needed.

**What are you doing now?**

**Focus is to encourage the village to take more interest/ownership of the building.**  
**Churchwarden and Treasurer standing down.**  
**Looking for others to take over the administration and care of the building.**

### Where are you seeing the Kingdom of God emerging?

Open the Book visits school every two weeks which is well received by children and staff. So are termly assemblies.

A group of ladies, non worshippers, offered to clean the church each month!

### What are you fearful about?

Future of the church.

How to pay for the upkeep.

How to afford repairs.

### What are you hopeful for?

That the church in Redmile can be used for both community use and for worship and bring people together.

Sharing of resources within a Minster framework will grow our worshipping communities.

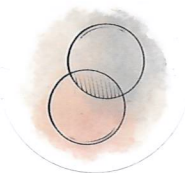
### How you can pray for us.

Pray that this is the way forward for our parishes.

Pray that as we begin to work together and support each other, we can grow the Kingdom of God here in the Vale.

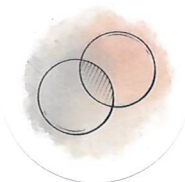
Who are you?

Very caring community through the pandemic looking out for one another offering shopping etc. which is still going on. Working together with our Methodist friends planning services and sharing experiences together, hot potato etc afternoon tea's etc. Villagers are happy to help with social activities but not many attend Church regularly, we rely on congregants from other villagers to make up our numbers which averages 20 at a service.



Where have you come from?

Having worked tirelessly for several years raising money for general amenities we have little money to spend on repairs.



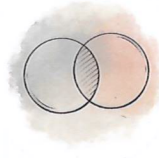
Where are you going?

To try and encourage young and old to help us build a future for our village church, to share the love of God with villagers through caring and example and to share the word whenever possible. Always seeking for new idea's to share God's story.



What are you doing now?

We have a bible studied on a Wednesday afternoon at 3pm in Rotherby, this is held in Church in warmer weather and in each other's homes in the winter. This is open to everyone; we support each other in prayer fellowship and learning from each other. We now have a toilet in Church and the meeting area is complete, new stacking chairs have been ordered for this area, which is well used. Activities in church which include a winter walk in December then back to church for soup and a roll, cream teas every Sunday in August which all the village helps with, Bonfire night in November which is held in Gary's field, Winter warmer in October where we invite new comers to the village. As we don't have a village hall in Rotherby our Church has become a social hub which we intend to expand. Through all these activities we try to share God whenever the opportunities arise.



**Where are you seeing the Kingdom of God emerging?**

Gift aiding increased after our funding programme in 2020 and we intend to invite new comers to join the programme.

Activities in church

**What are you fearful about?****What are you hopeful for****How you can pray for us.**

Recognising the weakness we may be seen as strengths by others. 5 DCC members  
Build on walking groups lunches  
This church is a place of Bible study for UW  
To equip those in the use of technology and sharing of ideas for worship.