

[illegible]



## THE DIOCESE WELCOME



Thank you for your interest in this role. Please be assured that there are many people praying for this process of discernment, and we trust that you will know God's guidance as you explore whether it is right to apply.

As part of your consideration, it is important to understand that the Diocese of Leicester, like every diocese in the Church of England, is in transition. After a long process of discernment (a process which we called *Shaped by God Together* and which involved much prayer and literally hundreds of small group conversations in every part of the diocese), Diocesan Synod agreed a new framework for the diocese known as *Minster Communities*. ([see more on our website](#)). Anyone coming to work in the diocese therefore needs to be committed to engaging with this new framework and embedding it within the church communities they serve (understanding that it will be applied in different ways in different contexts) and be flexible and prayerful in discerning how their particular role fits and will evolve within this wider framework. This will be explored with you at interview, and, if you are appointed, will be major part of the induction process.

In addition to this, we are on an exciting journey of learning about church planting and fresh expressions of church, and about intercultural mission and ministry – two areas where we have received substantial funding from the national church. We are also committed to exploring intergenerational work, reducing our impact on the environment, and crossing the divides both in the church and in the world. We therefore want people who are open to learning, who are humble in admitting that they don't have all the answers, and yet who are bold in proclaiming the Gospel in word and action.

These changes require not only considerable flexibility and adaptability from clergy and lay ministers but also great resilience. This is why we also place a strong emphasis on wellbeing – seeing this as a partnership where you take responsibility for your own wellbeing, while knowing that there is always support available from bishops and diocesan staff. Additional support is also offered by our partner organisations such as Launde Abbey (retreat centre), St Philip's (interfaith centre), and of course the Cathedral.

I hope that I may have the opportunity of meeting you in the near future, but the meantime be assured of my prayers.

Yours in Christ,



**The Rt Revd Martyn Snow**  
**Bishop of Leicester**

## SHAPED BY GOD TOGETHER – A BRIEF INTRODUCTION

*Our new Shaped By God Together Minster Communities framework will help our local worshipping communities to grow the Kingdom of God and live out our everyday faith.*

Shaped By God Together (SBGT) is the process through which the diocese is currently reshaping to ensure our ministry and mission is equipped and supported in the best way possible within our vision of the Kingdom of God, and our diocesan finances are used in order to resource our strategic priorities.

As part of this SBGT process, the Diocesan Synod voted strongly in favour of the Minster Communities framework in October 2021. Between 2022 and 2026, every parish, fresh expression of Church, clergy person and lay minister, chaplain and school, will be expected to participate in conversation between local context and the diocesan leadership, in order to determine how they find their place within the framework as we form 20-25 Minster Communities across the diocese. Alongside the structural changes (which are likely to involve Joint Church Councils), we are encouraging all worshipping communities to develop how they enable discipleship and encourage vocations, grow in outwardly focused mission, engage with children, young people and schools, and work in partnership across differences. The development of a healthy culture of wellbeing is also vital.

More detailed information can be found on the Diocesan website the [SBGT webpages](#).

Claire Bampton, Diocesan Programme Manager



## WHO WE ARE

Humberstone and Thurnby Lodge is a Benefice of two parishes and forms part of the City of Leicester Deanery. We are part of the Diocese of Leicester and within this the Archdeaconry of Leicester

## WHERE WE ARE

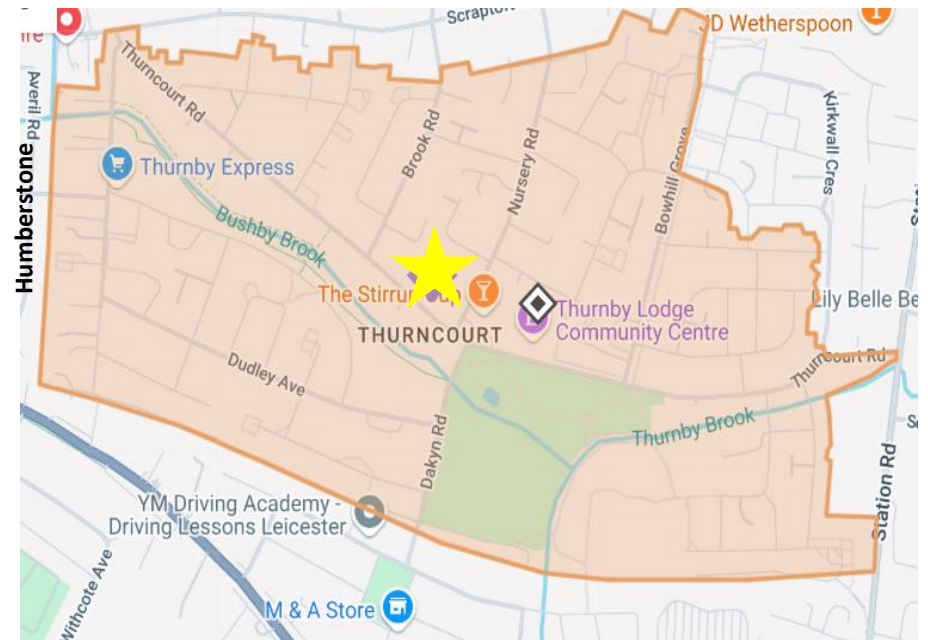
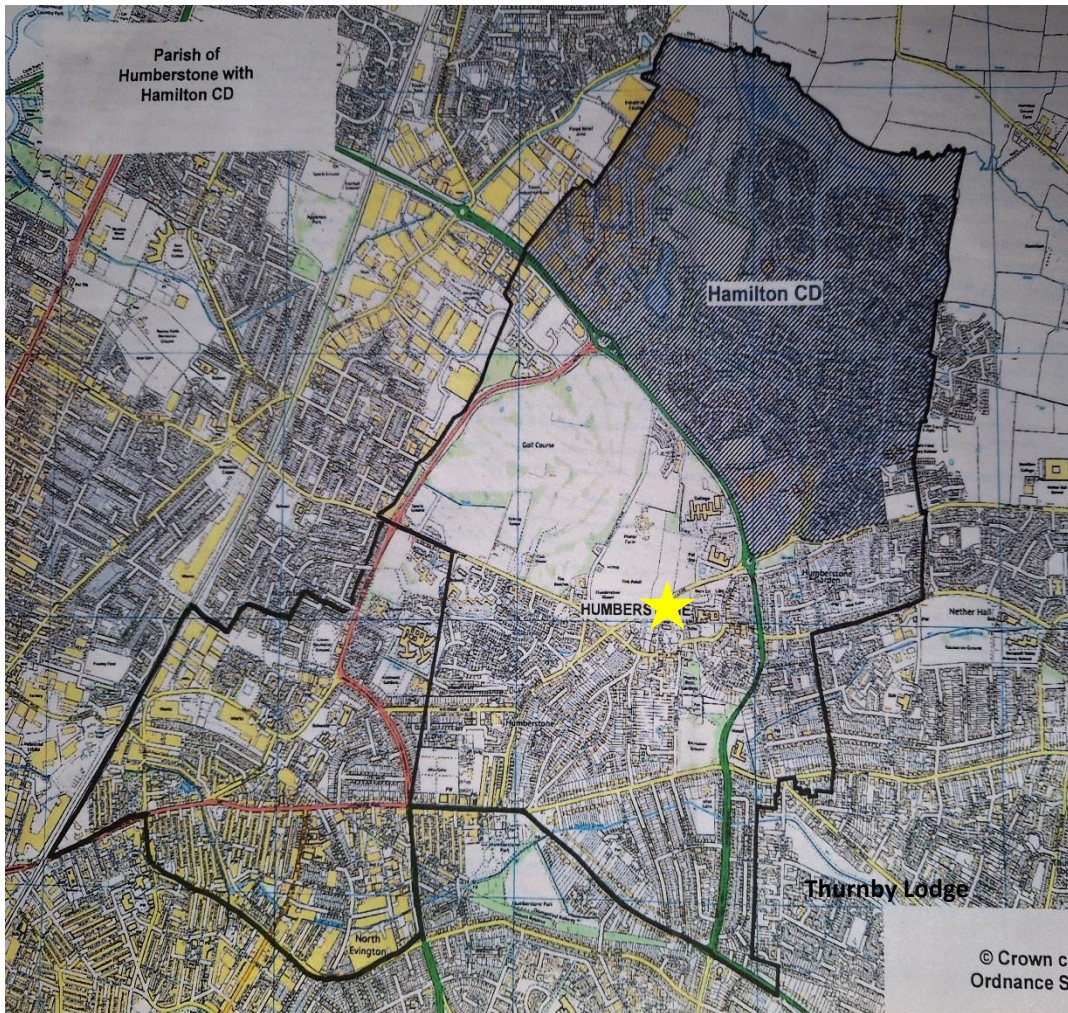
Sitting within a conservation area about 2 ½ miles east of the city centre, the parish church of St Mary & St Barnabas serves the whole area of Humberstone and New Humberstone after the church of St Barnabas New Humberstone closed and joined with the parish of St Mary's in 2019. The parish now stretches from beyond the outer ring road to the east going back towards the city along the A47 to the Midland Main railway line. Humberstone is served by 3 large green spaces and a few smaller ones. There are 9 schools in the parish including a very local junior and an infant academy, a Sikh primary school, an all age Hindu school, a 6<sup>th</sup> form college and St Barnabas C of E primary school.



The parish church of Christchurch is on the furthest eastern edge of the city and is 4.6 miles from the city centre. The church is in a prominent position within the Thurnby Lodge estate. The estate was originally built as a council estate in the 1950's with plenty of green spaces and now has a good percentage of privately owned properties. Next to the church is a residential care home, whilst nearby is a popular public house and a row of shops. There is also a community centre and a Peace Centre. We have two state primary schools and a large park on Thurncourt Road including a sports field. There is also a medical centre and good bus routes going both into the city and outer circle around the city.



## Map of the Parishes







## WHO WE ARE LOOKING FOR

### Person specification

- A pastoral priest who is approachable and will listen to our story.
- Catalyst for nurturing and developing discipleship and vocations.
- Someone who is comfortable and understands working with other faiths.
- Bridge builder who can bring people together.
- Insightful into identifying opportunities for serving, working and journeying together.
- Secure being 'on the edge' with our diverse communities.
- Passion for enabling children, young people and school's ministry.
- Good management skills to collaborate with us to make difficult decisions.
- Able to work with the inclusive nature of our churches.

### Role description

- Being engaged on the edges of our worshipping community.
- Drawing and weaving together the threads of our diverse communities.
- Play a part in the Minster Community offering their gifting in ministry.
- Welcoming other giftings and ministry from the Minster Community.
- Chart a path for the use of our buildings, (especially at St Mary's)
- Help us increase community use of our buildings
- Provide spiritual guidance and pastoral care to the children and staff of St Barnabas CofE School

St Barnabas Children  
said they would like a  
new priest to be.....



"Preach the word; be prepared in season and out of season; correct, rebuke and encourage - with great patience and careful instruction."

*2 Timothy 4: 2*

"Keep watch over yourselves and all the flock of which the Holy Spirit has made you overseers. Be shepherds of the church of God, which he bought with his own blood."

*Acts 20:28*

"Let us not become weary in doing good, for at the proper time we will reap a harvest if we do not give up."

*Galatians 6:9*



## WHAT WE CAN OFFER

- Two committed PCC's who have a track record of working together, including an experienced team of church officers.
- Talented and experienced ministry team of associate ministers who, with a locally authorised minister, are exploring their emerging vocations.
- Good relationships with local schools, churches, residential homes in our parishes and the wider city
- A desire to grow in discipleship and faithfulness.
- Faithful congregations who wish to celebrate joy, peace and fun with their new minister.
- Church wardens who are committed to caring for their new minister and ensuring they take their day off!
- Wide experience of children and family worship



"Year 1 loved their visit to the church. They enjoyed listening to some stories, looking at some Christian artifacts and listening to some hymns played on the organ." *Falcons Sikh School*



"Year 2 enjoyed a meaningful walk to the church. A wonderful opportunity to explore & deepen their understanding."  
*Avanti Fields ISKON School*



"Celebrating international women's day today, our minister from our local church came and had a chat with some of our residents on her journey and who inspired Viv to become a minister, then Viv went on to ask who was their inspirations " *Kerry at Thurn Court Care Home*



"Year 1 thoroughly enjoyed their trip to the church. Thank you for having us and giving time to reflect."  
*Humberstone Infants Academy*



## OUR WORSHIP AND SERVICES

- Our worship follows a central Anglican tradition, with openness to other forms of worship, and our services are led by our clergy and strong lay team.
- We are committed to the involvement of lay people in our regular worship and to making our worship as accessible as possible to everyone.
- We are continually reviewing the pattern of worship and prayer in line with our shared vision. Our current offering is

Sundays and midweek	Christchurch	St Mary & St Barnabas
<b>Music provision</b>	Streamed music (there is also an electric organ)	Pipe Organ, Piano
<b>1<sup>st</sup> Sunday</b>	Family Service (Lighthouse Service) at 9.30am with streamed music	CW Eucharist at 11am with organ
<b>2<sup>nd</sup> Sunday</b>	CW Eucharist at 9.30am with streamed music	Service of the Word at 11am with organ
<b>3<sup>rd</sup> Sunday</b>	Service of the Word at 9.30am with streamed music	CW Eucharist at 11am with organ
<b>4<sup>th</sup> Sunday</b>	CW Eucharist at 9.30am with streamed music	Service of the Word at 11am with organ
<b>5<sup>th</sup> Sunday</b>	Joint service alternates between churches CW Eucharist at 11am	
<b>Wednesdays</b>		CW Said Eucharist at 9.30am
<b>Fridays</b>		ZOOM evening prayer at 7pm
<b>PARISH FESTIVAL SERVICES &amp; SHARED BENEFICE SERVICES THROUGHOUT THE YEAR</b> THESE INCLUDE ADVENT, CHRISTINGLE, CHRISTMAS, MOTHERING SUNDAY, ASH WEDNESDAY, MAUNDY THURSDAY, GOOD FRIDAY, EASTER, HARVEST, REMEMBRANCE SUNDAY AND ALL SOULS		
<b>Occasional Offices in 2024</b>	<b>Christchurch</b>	<b>St Mary &amp; St Barnabas</b>
<b>Baptisms</b>	8	2
<b>Weddings/Blessings</b>	0	6
<b>Funerals</b>	0	7
<b>Interments of Ashes</b>	0	2



## MISSION AND OUTREACH WORK ACROSS THE BENEFICE

### St Mary & St Barnabas:

We have a strong children's ministry with our local schools which underpins our efforts to reach out to our multi-faith community. This includes hosting visits into St Mary's Church, going out to lead assemblies in the local schools and regular collective worship in **St Barnabas School**. St Barnabas School Christian mission is supported by Wendy Scales from Parable arts who leads workshops at key festivals. We have good relationships with the nationally known **St Philip's Centre**, [www.stphilipscentre.co.uk](http://www.stphilipscentre.co.uk), whose purpose is to bring communities together. Building on this we have been involved with the work of the diocesan **intercultural worshipping community** project. We are part of the **Churches Together in Humberstone** group and we have members of the congregation on the **Humberstone community forum**, a group working for the community. We work together with our neighbours at **All Saints Church Scraptoft** to provide ministry support to the community in **Nether Hall** – including leading regular worship in **Aaron Court** Care home. A small group also leads monthly worship in **Danbury Gardens** supported living complex.



"Today the primary children enjoyed an assembly teaching them about Advent & Christmas." *Avanti Fields ISKON School*



We feel that we are in a very strong position to reach out further beyond our church confines with an experienced minister to lead us onwards. We have an experienced team of officers and PCC members. The PCCs have forged a good working relationship between the two parishes during the vacancy.



"We are so very lucky to have St Mary's in our community. The children in Key Stage 2 loved telling friends & families the nativity story in church this week." *Humberstone Juniors Academy Exec head*





## Christchurch:

We have developed a popular family service on the first Sunday of each month which we call the **Lighthouse service**. Our Associate Minister, Evernice Tirivanhu, takes the service every third Sunday and encourages and teaches members of the congregation to help with taking the readings. We share our church and hall with the **Seventh Day Adventists** each Saturday and we have a good working relationship with them. We are also part of the **Churches Together in Humberstone** and have hosted a luncheon for the past two years. We have good relationship with our residential home, **Thurn Court**, and St Mary's Associate Minister regularly holds services there. We work with the local community to honour **Remembrance Day** and the Seventh Day Adventists also lead the parade with their band.



We encourage the lonely and isolated to join in our social events and we are planning a **Friday Fellowship** as a warm and welcoming space to provide food and companionship to all. We need guidance on how to reach out to more people in our community and we are struggling for volunteers but, **collaborating** with the Seventh Day Adventists and the Peace Centre, we are hoping to resolve that issue. We have a small team working with these groups to improve communication and together we will be able to **reach out** to more people in our diverse community.



"The intertwining of our congregations means that we celebrate each other's successes and support each other through life's losses." *Seventh Day Adventists*



"I like it here because I'm not judged. I can just be myself." *Friday Fellowship participant*

"Christchurch welcomes everyone, whoever you are. Christchurch is family." *From sign language interpreter at Lighthouse Service*



## INDIVIDUAL PARISH DETAILS

### St Mary & St Barnabas Parish

- The parish has a population of 37,000 with very high ethnic diversity (80% are not white British) and faith diversity (around a third Muslim and a third Hindu)
- Electoral Roll: The Electoral Roll stands at 63. The Church Urban Fund (CUF) ranks the parish among the most deprived in the country
- PCC: There are 11 PCC members
- Meets: 6 times per year with special meetings if necessary to discuss particular concerns
- St Mary's has an Associate Minister, Viv Froggatt and is supported for Wednesday Eucharist by PTO Revd Canon Peter Taylor
- There are 2 Churchwardens (Roy Kirk and Les Mitchelmore) & 1 Deputy Warden (Coral Cole)

### Brief summary of parish life at St Mary & St Barnabas .

We have maintained a full worshipping programme during the 3 year long vacancy thanks to the work of Viv Froggatt and the support of visiting clergy. We use the Common Worship form of service and follow a **central Anglican tradition**. Our congregation is beginning to grow again and we are encouraged by the regular attendance of 2 new families. Our **school** children's work is a strong point and in the past 12 months we welcomed some **1,500 children** into the church to experience a Christian worshipping space and to discover more by activities and discussion. This is a major vehicle of outreach to our multi-faith community. This outreach is backed up each year with our **Spring Festival**, a day of music, dance and food, to bring the multi-faith parish together. Our services are accompanied by music played by Tim Lees on our J. W. Walker **organ**. We have a number of weddings a year which are celebrated often by a peal rung on our 6 **bells**. We have a **safeguarding officer**, Linda Thom, keeping in line with Diocesan policy. We are proud of our efforts during our long vacancy of what we have maintained and achieved. We feel we have a sound base to go forward in strength.

### Fabric – Church buildings including halls.

The church of St Mary was built in the **14<sup>th</sup> century** and the nave was renovated in 1857. There are Victorian **stained glass** windows in the nave and chancel. The tower has **6 fine bells** which are rung at weddings and a recently renovated **striking clock**. There is an excellent 2 manual **organ** built by J. W. Walker which is regularly serviced. The building is kept in reasonably good condition as finances allow. The nave has wooden pews for the congregation. The **churchyard is closed** and maintained by Leicester City Council with a large area for the burial of ashes and a path for the disabled.

There is a **Church Hall** built in 1958 but now unfortunately currently **closed** because of Internal and external costly building problems. There are **toilets** in this building including a disabled toilet, which are still **available** for church users.



## Christchurch Parish

- This parish has a population of 6,034 with high ethnic diversity (45% are not white British).
- Electoral Roll: The Electoral Roll stands at 23. The parish ranks amongst the 10 % most deprived parishes in the country.
- PCC: There are 10 members on the PCC
- Meets: 5 meetings a year plus any additional ones as and when they are necessary.
- Churchwardens: There is one churchwarden, Andy Harding, and one deputy churchwarden, Julie Harding.
- Christchurch has one Associate Minister, Evernice Tirivanhu and one Locally Authorised Minister, Tracey Coley.

### Brief summary of parish life at Christchurch:

Although we have maintained our services since our last Vicar left with the help of St Mary's associate minister and visiting clergy, the number within our congregation has decreased considerably, especially since our youth and family worker's role ended last year. She took our family service which was very popular. Our newly appointed Locally Authorised Minister, Tracey Coley, has now introduced our new **Lighthouse family service** which is doing well but unfortunately we haven't regained any of the family units we lost last July. Viv Froggatt from St Mary's has kept in contact with our **schools** and now with the help of Tracey is working to develop a good relationship here and to reinstate visits for the children possibly **Experience Christmas and Experience Easter**. We reach out to our community with the newly formed **Friday Fellowship** which also runs a charity shop. Our annual **Christmas Fayre** is always well supported. Our relationship with the **Seventh day Adventist Church** is strong and we are working on strengthening this so we can support each other within our community. Unfortunately we do not have a safeguarding officer in post but the PCC members are all aware of our policy and are all responsible for everyone's safe keeping.

### Fabric – Church buildings including halls

Our church was built and consecrated in **1957** and is a pleasant **airy building** which is great for all sorts of imaginative worship. There are comfortable **upholstered chairs** and wooden floors. There is a storage room, a lounge, a vestry and toilets in the church building. The rear of the church has been put aside as a **café with bistro tables** and comfy sofas. There is a large **car park**, fronted by lawns and good disabled access to church and hall. Our **Church Hall** is well maintained and was **refurbished** to a high standard in 2018. It has a kitchen, a storeroom, toilets plus a disabled toilet and baby changing area. The smaller room holds the **charity shop**. It is **hired out** to several regular groups throughout the week and also hired for private events. This is monitored by two PCC members and maintained by the churchwarden. It has the capacity for 80 people and a large car park. Our **memorial garden**, situated next to the church is now **closed** and is maintained by the churchwarden as is the community garden at the side of the church.

## MEET SOME OF THE TEAM

Roy - Churchwarden StM



Evernice - Associate Minister



Linda (Safeguarding StM) & John (PCC StM)



Jennie (PCC StM)



Les  
Churchwarden  
StM



Andy  
Churchwarden CC



Tracy B & Barbara  
(PCC CC)



Julie (PCC CC) & Tracey C (LAM CC)



Jan PCC sec (CC & StM) & Coral (PCC StM)



Stan (PCC StM)



Matt & Catherine (PCC CC)



Kerry  
(PCC CC)



Tony (Treasurer StM)  
with Roy



Steve (St Barnabas Head Teacher),  
Karen (Assist Head) with Bishop of  
Trichy



Viv - Associate Minister



Julie (PCC StM) with  
David & his son Jonathan



Tim - Organist StM





## WHERE YOU WILL LIVE

### Description

The House No. 73 Nursery Road, Thurnby Lodge was erected in 1957. It is constructed with external cavity walls with facing brick to all elevations off a 2 course engineering brick and felt damp proof course. The main house pitched roof is covered in interlocking concrete tiles, with asphalt covering to the single storey flat roofs to the entrance porch and utility room. The property has a brick walled single garage with asphalt covered flat roof. Alterations to convert the outbuildings and fuel store to a utility room were undertaken in 1988. All windows are double-glazed in PVCu casements and frames.

To the ground floor, the accommodation comprises entrance porch, hallway, living room, dining room, study, kitchen, utility room, cloakroom and WC. To the first floor are four bedrooms, bathroom, WC and shower room.

