



**BISHOP'S
CHILDREN & YOUTH
COUNCIL**

**SAFEGUARDING
LISTENING REPORT**

INTRODUCTION

How do we hear and respond to the voice of children and young people in the Diocese of Leicester?

To find some answers, we are running a termly listening process, where children and young people lead on agenda setting, sense making and reporting.

The Process

A group of young people set the agenda and design a listening resource to distribute to listening groups.

Listening groups are facilitated in schools and church groups, across a range of contexts. Children and young people are asked to share their thoughts, ideas, and stories, in response to a series of conversation prompts and interactive activities.

The Theme

The theme chosen by young people for Spring/Summer 2025 was **Safeguarding**. We are running this listening campaign in partnership with the Diocesan Safeguarding Team: leicester.anglican.org/info-for-parishes/safeguarding

The Report

This report summarises and showcases the responses we received from children and young people. All quotes in this report are attributed to **children and young people**, unless stated.

LISTENING

We've heard from more than 1300 young voices from across the city and county, via seven termly listening exercises.



Read all our listening reports and watch Bishop Martyn's response videos on the Diocese of Leicester website >>

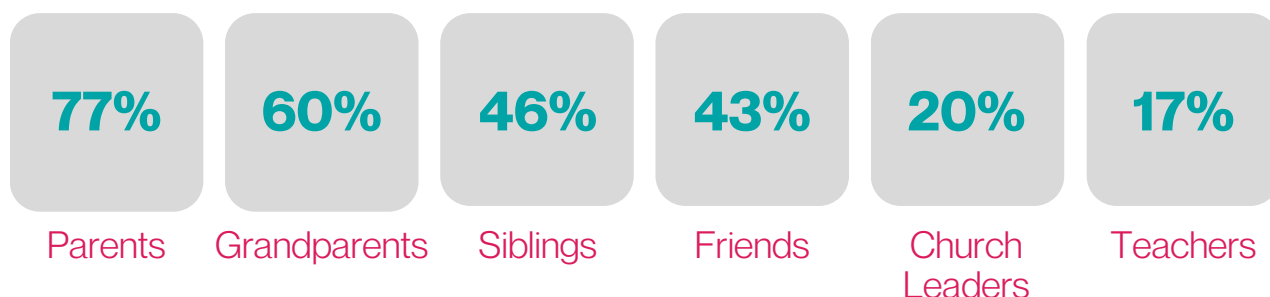
www.leicester.anglican.org/info-for-parishes/children-families-and-young-people/bishops-children-and-youth-council-bcyc



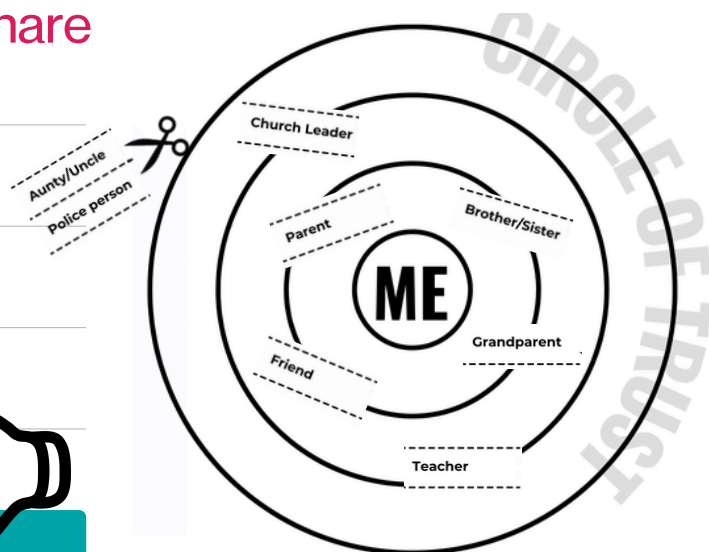
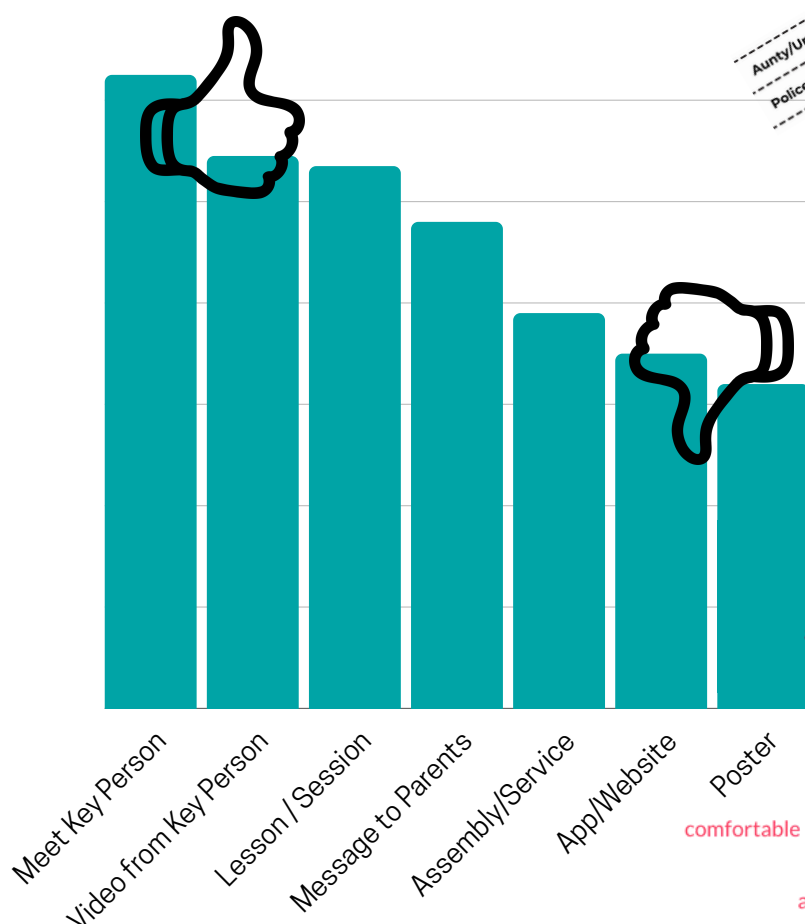
SAFEGUARDING EXECUTIVE SUMMARY

107 Young Voices. Made up of **49** children and **58** young people across **3** primary schools, **1** secondary school and **8** church groups. Ages 7-17 years, **18%** UKME/GMH

Who's in your 'inner' circle of trust?



What are the best ways to share safeguarding information?



What does Safe Space feel like?



THE NUMBERS

Primary Schools

Church Groups

Children (7-11)

Ages

107

3

8

49

7-18

1

58

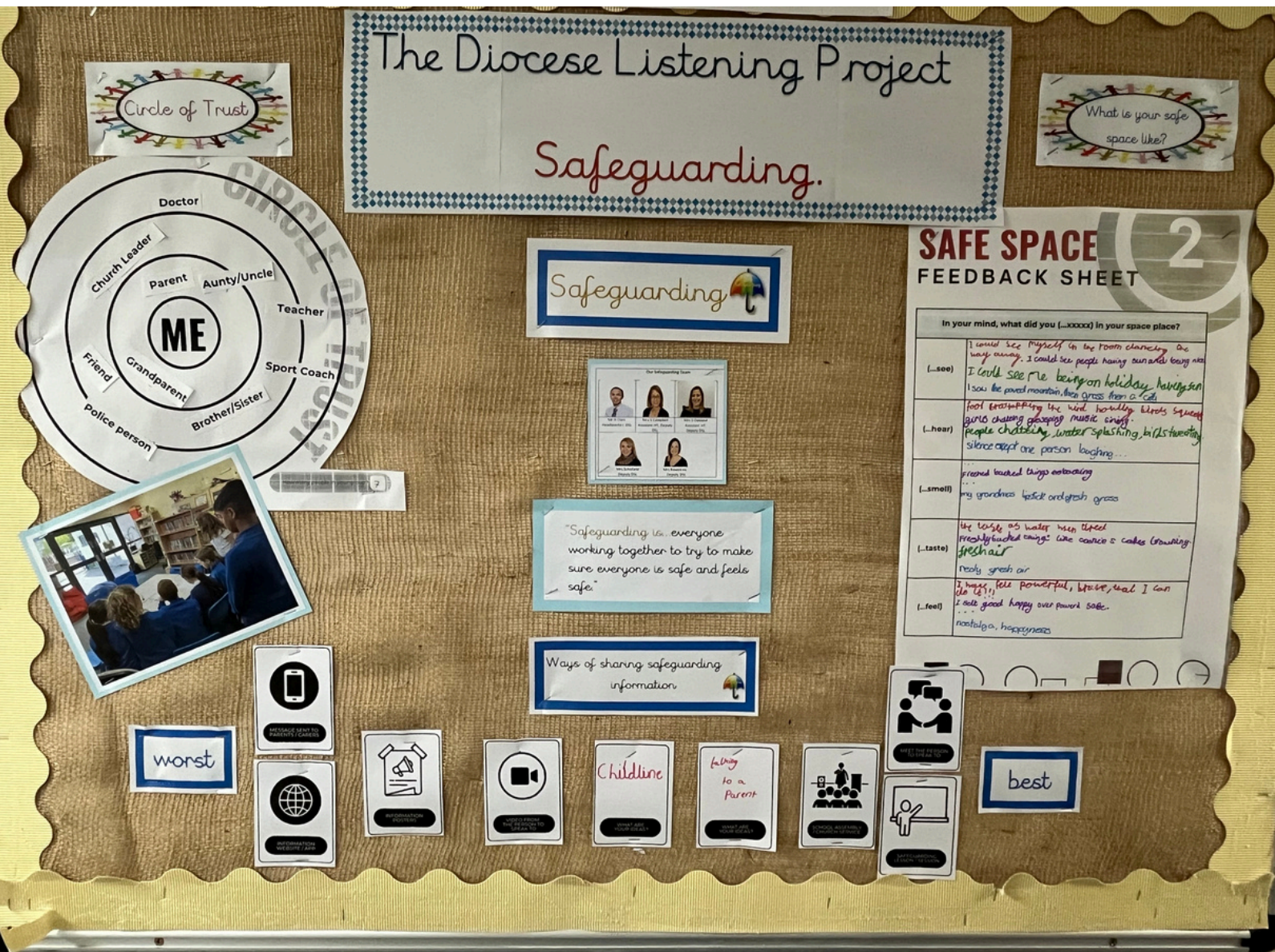
18%

Young Voices

Secondary
Schools

Young People
(12-18)

GMH / UKME



~ Display by St Edwards CofE Primary School, Castle Donington

ROLL CALL

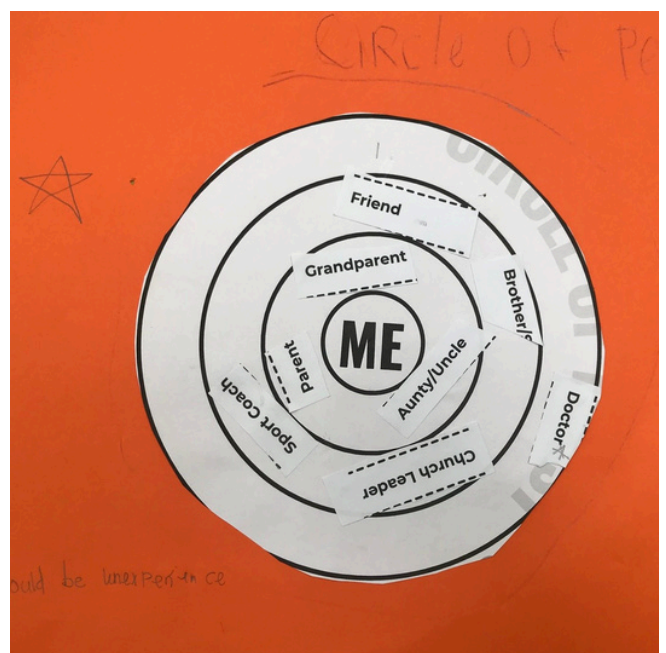
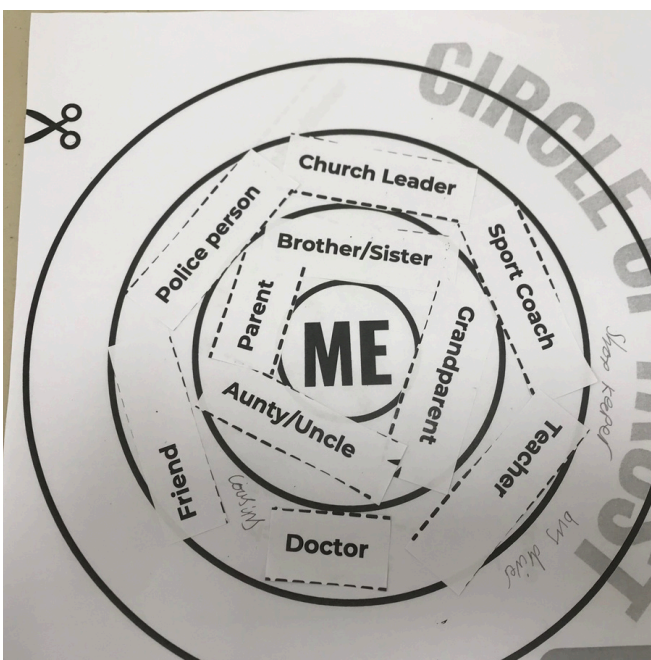
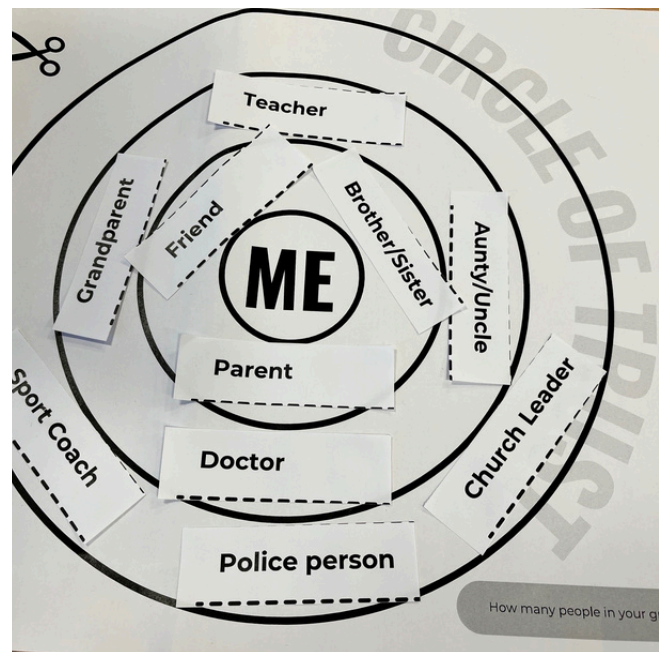
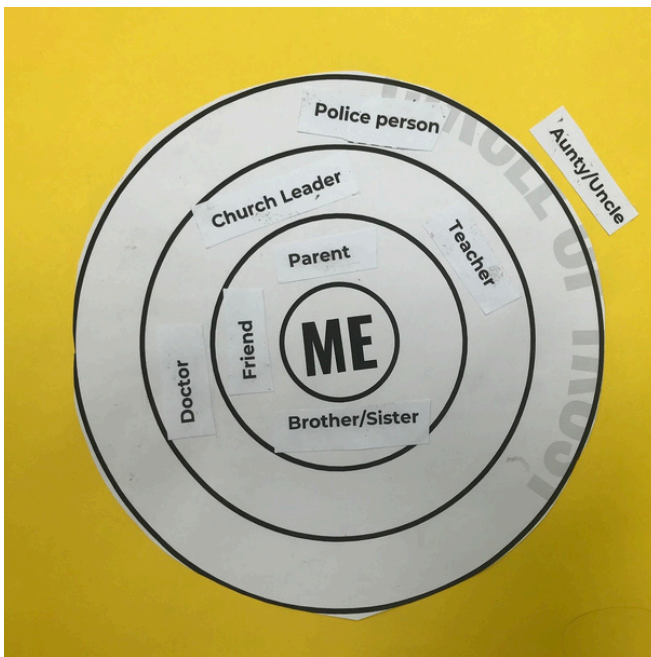
All Saints CE School, Coalville
Crossfire Youth, Groby & Ratby
Gathering & Traveling fxC, Melton Mowbary
Leicester Cathedral, Junior Choir
Leicester Cathedral, Senior Choir
Pathfinders, Emmanuel Loughborough
Rawlins Academy, Loughborough
St. Bartholomew's CofE Primary School, Quorn
St Christopher's, Saffron Lane, Sunday Group
St Edwards CofE Primary School, Castle Donington
St Paul's Church, Oadby, Tribe Youth Group
Waltham Church Youth Club

A **MASSIVE** thank you to all children,
young people and facilitators for their
participation, enthusiasm and honesty!

ROUND ONE

CIRCLE OF TRUST

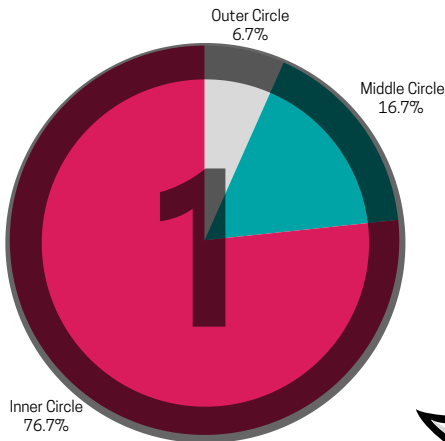
What we did: Participants were invited to discuss and arrange a list of people on concentric circles. Placing those they trust the most and are most likely to talk to, in the centre of the circle.



MOST TRUSTED

Parents (77%) had the highest % in the inner circle, followed by grandparents (60%) and siblings (46%).

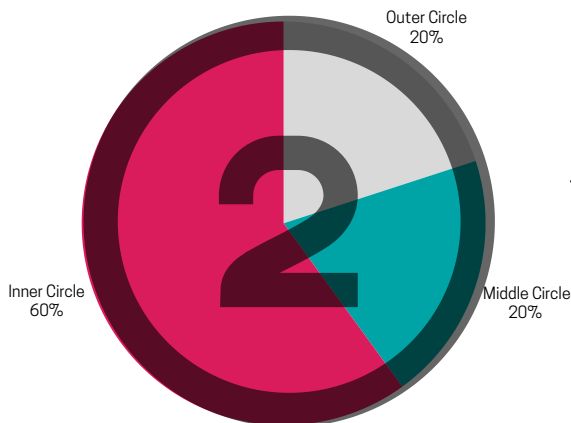
Parents



How much time we spend with someone and the quality of the relationship we have with them builds trust.

positive or negative experiences of parenting often depend on how our parents were parented.

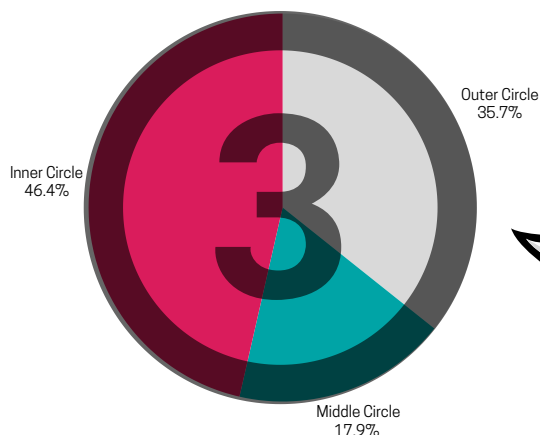
Grandparents



Grandparents are good at feeding and listening.

Surprised grandparents was so high!

Siblings



Siblings trust was high and low. They're relationships that are always changing.

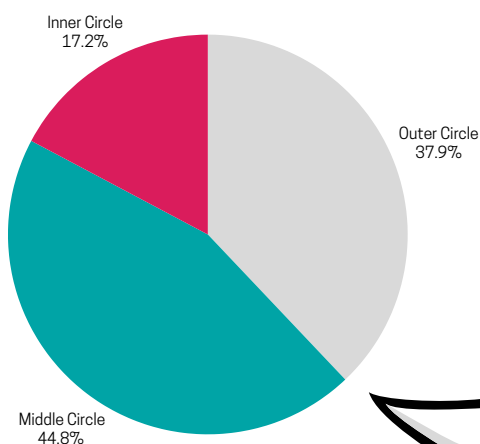
OTHER FINDINGS

Sports coaches (69%), doctors (63%) and police (55%) had the highest % in the outer circle...

Sports coaches, doctors and police can be stern and maybe less familiar.

They may not have a personal relationship with police - so take what social media says as truth. I see lots on social media that shows a negative angle on police - they don't do anything to help.

Teachers (45%) had the highest % in the middle circle...

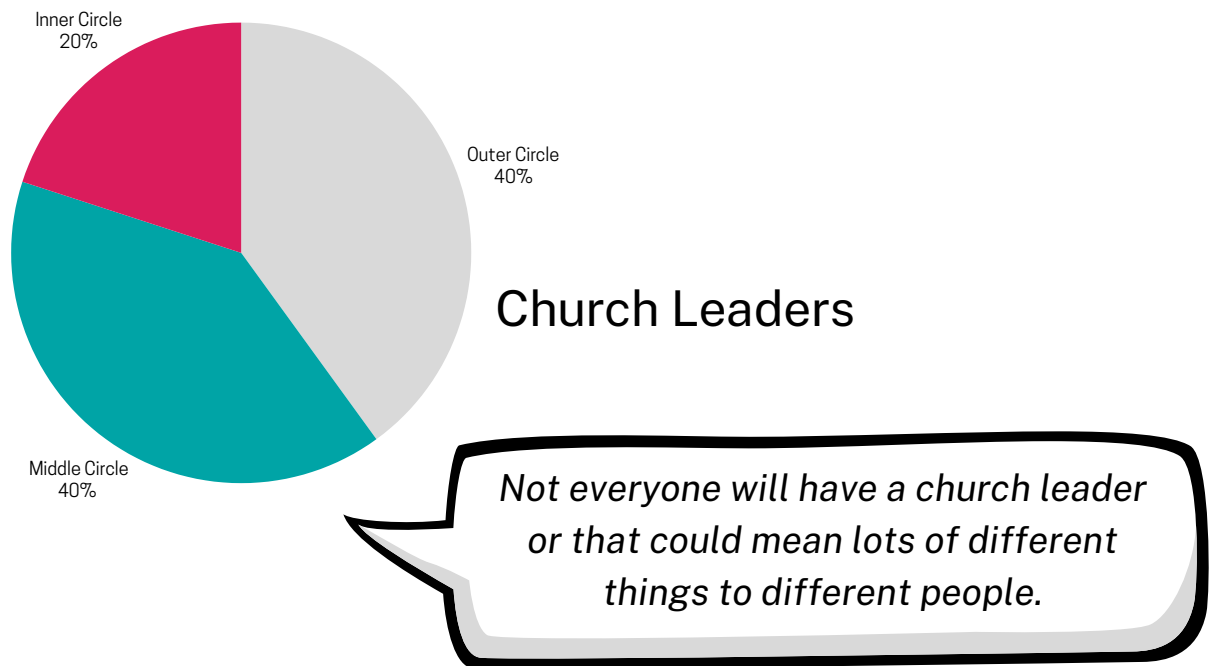


Teachers

Even after a long time some teachers don't know your name and this impacts relationship.

Trust really varies on personality and those who make an effort - like teachers who come out in mornings, at break and lunch.

Church Leader %'s were almost identical to teachers...



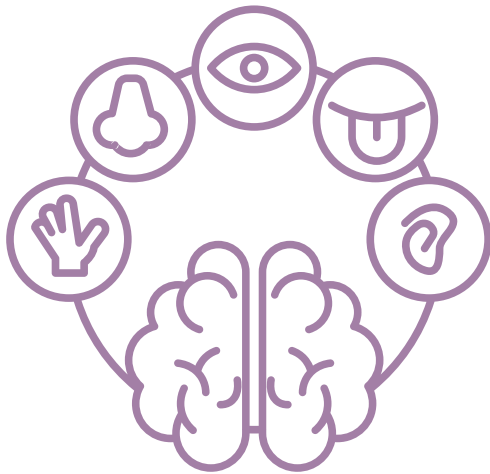
TAKEAWAYS

- People trust those they spend most time with
- Family are most trusted
- Trust is about knowing and being known (names)
- Scary / intimidating people (or roles) are less likely to be trusted or talked to
- Trust is related to 'effort' put in to relationship
- People don't hear many positive things about church leaders if they don't know any personally

ROUND TWO

SAFE SPACE

What we did: Participants were invited to use their imaginations to think about what safe space feels like...



FEEDBACK SHEET 1

Tree house in the peaceful jungle

In your mind, what did you (...xxxxx) in your space place?

(...see)	Wooden walls, birds, comfy bed, do-va plants, Wildlife outside the window.
(...hear)	birds, winds, foxes, squirts, parents
(...smell)	fruit, flowers, cookies!, mums cooking and looking
(...taste)	apples, mango, watermelon's.
(...feel)	happy, peaceful, relaxed.

SAFE SPACE

FEEDBACK SHEET 2

In your mind, what did you (...xxxxx) in your space place?

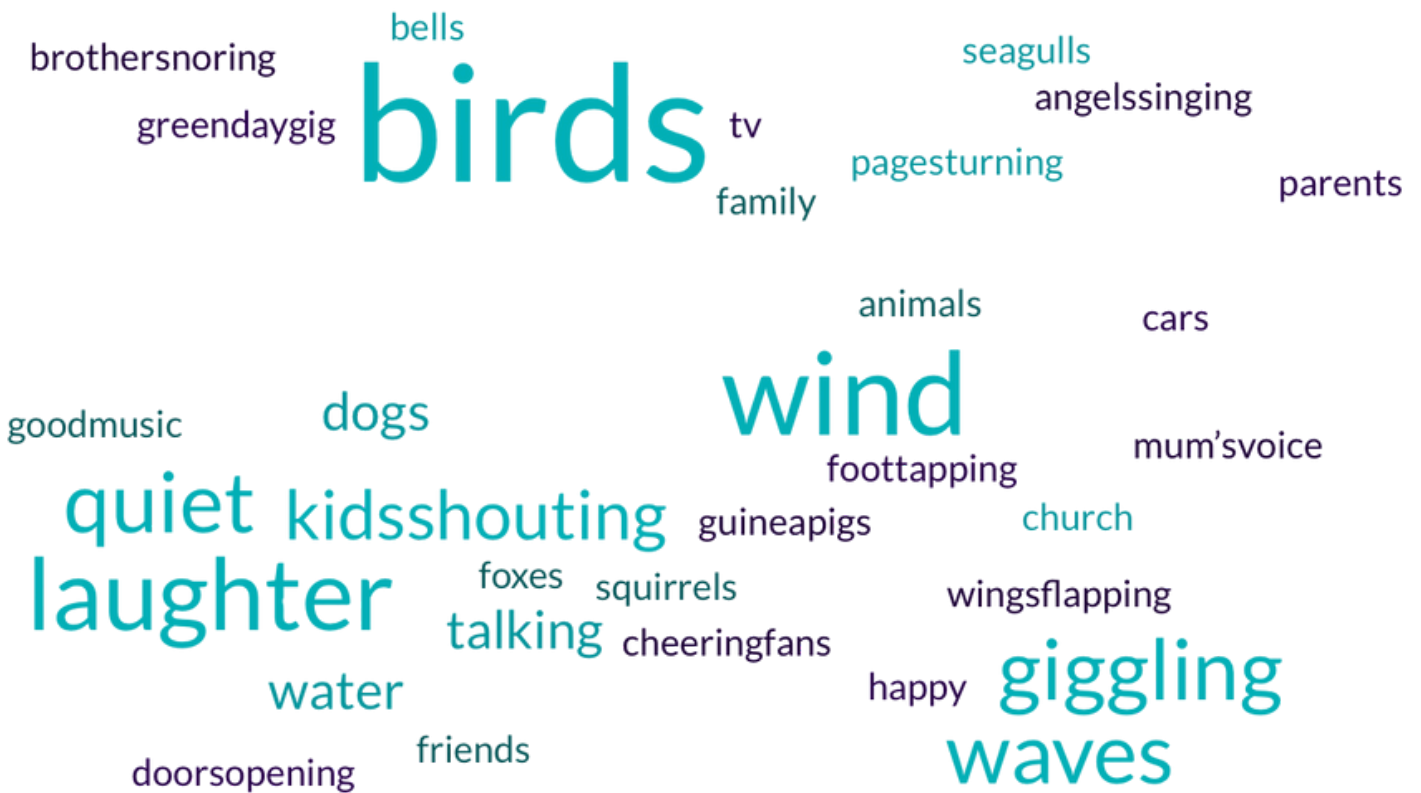
(...see)	Books, beds, TV, Football Pitch
(...hear)	The wind, TV playing
(...smell)	My my favourite food
(...taste)	
(...feel)	Warm air the puff of my carpet



I SAW...



I HEARD...



I SMELT...



I TASTED...



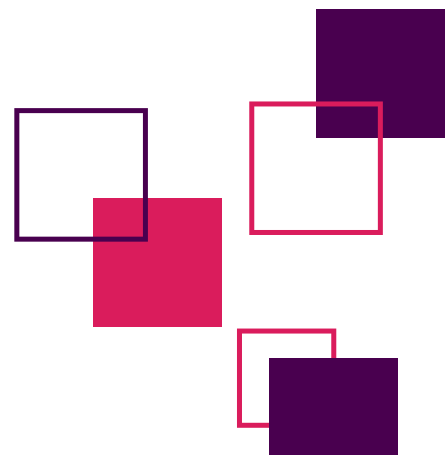
I FELT...



TAKEAWAYS

Safe space is...

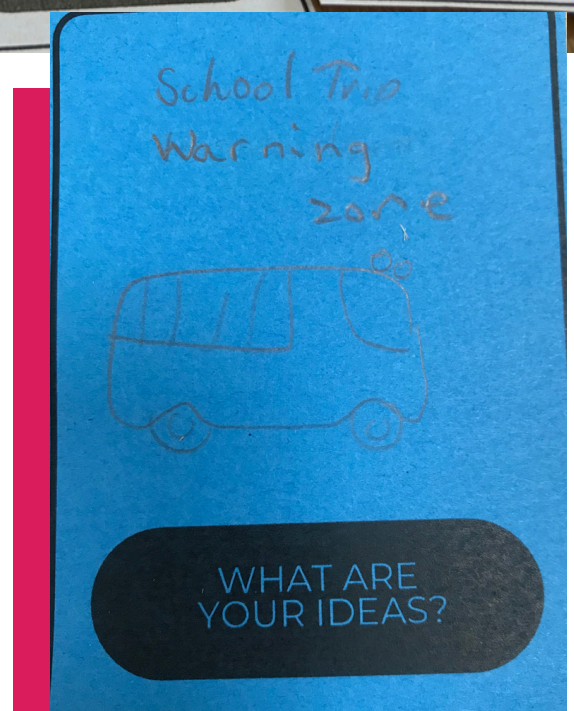
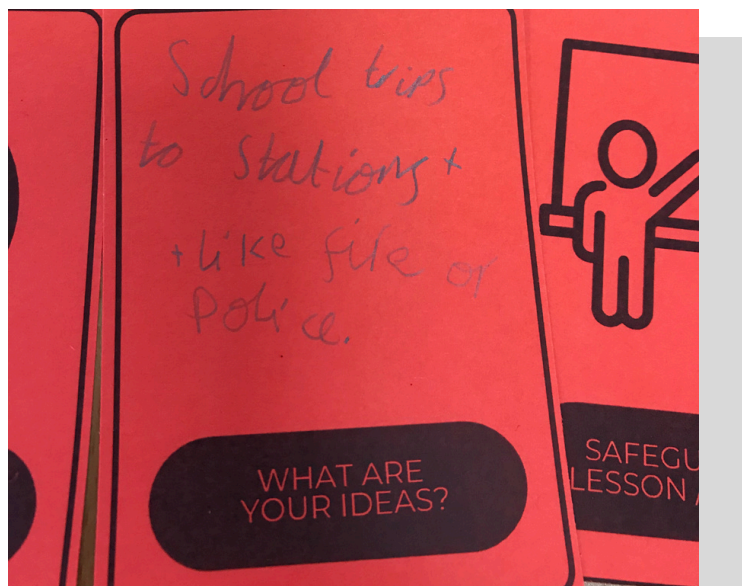
- Somewhere you feel happy, calm, peaceful and relaxed
- A familiar place - often with family, freinds and pets
- where food is freely available
- Different for everyone!
- Often in the outdoors
- In real life (not much mention of technology)



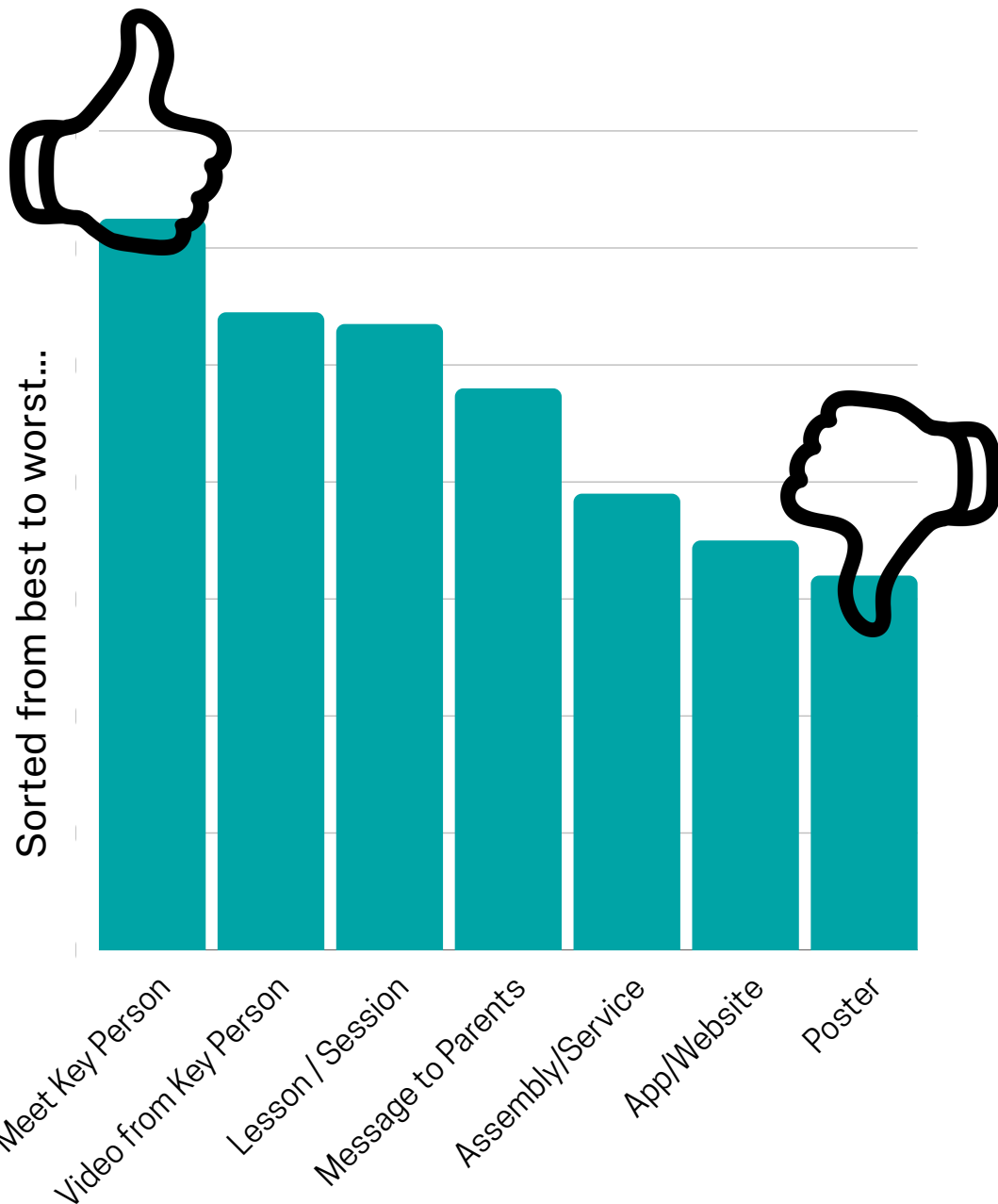
ROUND THREE

INFO-MO

What we did: Participants were invited to discuss and rate the best ways to share safeguarding information - *such as who to contact, where to get help...*



What are the best ways to share safeguarding information?



TAKEAWAYS

- Meeting a person is more interesting than a video
- Needs to be interesting and interactive (not a poster!)
- In person is better than online / technology

QUESTIONS? ACTIONS? WHAT NEXT?

Reflecting on the responses received from listening groups, a group of young people identified three key things from their sensemaking...

...what can we learn from these three things, and what can we action in response?

3 KEY THINGS

- Children and young people feel safest when those around them and their environment are **familiar**.
- Safe places often involved **food** and **being outside**.
- Safe places and sharing information are better **in real life (IRL)**, rather than online.

RESPONDING

So what actually happens next?

This report will be shared with participants, Bishop's Leadership Team and published on Diocese of Leicester website.

Bishop Martyn & Diocesan Safeguarding Team will be invited to respond to the report via video. The video response will be shared with participants and published on Leicester Diocese website.



Email Matt.Long@leicestercofe.org - for more info and resources.

CONTRIBUTORS

Resource Creation & Sensemaking

Young people at St Paul's Church, Oadby.
Facilitated by Lou McGoldrick - Youthworker.

Rachael Spiers - Diocesan Safeguarding Advisor
Adrienne Plunkett - Independent Chair
Matt Long - Youth Engagement